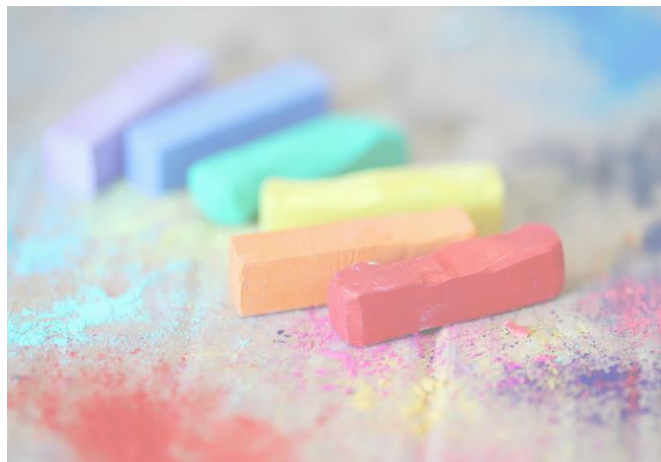




SHOOTING STARS.

Shooting Stars provides a warm, welcoming and inclusive environment where children can have the time to manage and reflect on their emotions. Creating a secure environment that provides a bridge between home and school, where they can authentically be themselves.

“I love coming to shooting Stars and like coming to school every day now”



Shooting Stars Ethos

At shooting stars, we aim to provide a nurture group to support the social and emotional needs of children and young people so they can thrive. Shooting Stars provides a supportive environment where children can learn appropriate behaviours and develop confidence.



What is nurture?

Nurture refers to the care and attention given to a child whilst they are growing and developing that supports them in building emotional resilience. In schools nurture focusing on emotional growth and aims to replicate this essential learning through positive relationships, firm boundaries and consistent communication.

Which children?

Pupils who would benefit from nurture sessions are identified from discussions with class teachers and the SENCo. Observations are carried out and a referral form filled out by the class teacher. This creates individual targets for staff to focus on throughout the sessions.

Three teaching assistants run and plan directed sessions ran by Miss Phimister, Mrs Kelvey and Miss Gittins. These are established, highly trained staff who work along side the SENCo (Mr Beresford) to ensure all children have a safe space they can learn and developed.

Shooting Stars is a welcoming environment where our children can blossom. Shooting stars is a small, supportive classroom within KPS specifically designed to address the social, emotional, mental health and behavioural needs. We are focusing on building positive relationships and coping skills through a structured, caring environment, with a low student-to-teacher ratio; essentially providing targeted intervention to help them overcome barriers.

